

BRILLIANT IN BRYANT

6017 29TH AVE NE

OFFERED AT **\$880,000**



Offered at: \$880,000

Neighborhood: Bryant

Year Built: 1925

Complete Renovation: 2005

Designer: Gretchen Evans

Bedrooms: 4

Baths: 2 3/4

Heat: Gas Forced Air

Parking: Detached 1 Car Garage

Sq. Footage: 2,600 (Buyer to verify)

Lot Sq. Footage: 4,000 Sq Ft KCR

Taxes 2005: \$5,040 (MetroScan)

MLS #: 26165000

Enjoy unrivaled charm and superior spaces in this **completely renovated 1925 Craftsman**. Re-invisioned by Designer (and owner), Gretchen Evans, no detail has been overlooked.

From the moment you enter this incredible home, you can sense the quality imparted to every detail. The living room is stunning with **custom moulding, hardwood floors and a gas fireplace**. The expansive and beautifully designed **gourmet kitchen and adjoining dining room** are exquisite. Whether it's dinner at home or a large celebration, this home makes entertaining easy. Don't miss the elevated deck off the dining room with lovely **western territorial views**.

Other highlights include 2.75 fantastic baths, 4 bedrooms (bedroom count includes the **Upstairs Master with a huge walk-in closet/nursery**, in addition to the lower level **entertainment room**), wine cellar, potential darkroom, and office/shop space in detached garage. This home truly has everything.



FINDINGSEATTLE.com

Mark Gutkowski

Exclusive Representation for Buyers | Sellers

Coldwell Banker Bain

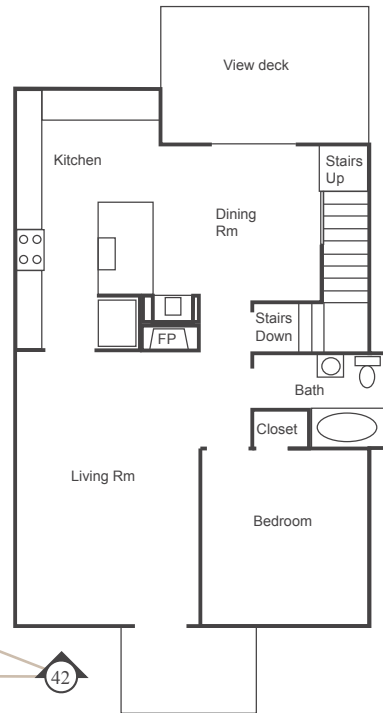
m | 206.369.4741



FINDINGSEATTLE.com

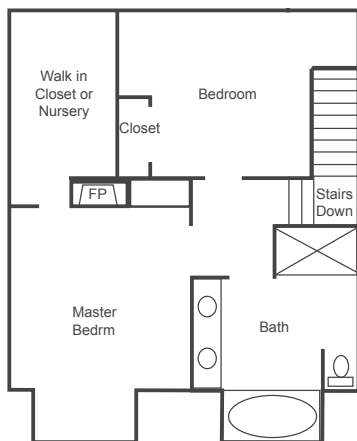
Main Level

Interactive floor plan tour available online

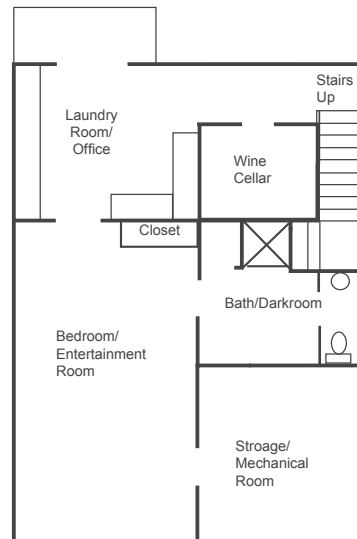


Online, photos correspond to numbered arrows.

Upper Level



Lower Level



Renderings are not to scale - for reference only.

Investing in property is one of the most important financial decisions you will ever make. I can help you ensure your success.



Mark Gutkowski

Exclusive Representation Buyers | Sellers
FindingSeattle.com
direct | 206.369.4741